



**PLATVORM**

Voor toekomstige  
levenswijze



Platvorm →

**Meshing physical and  
digital space**



**Tallinn 2035 Development Strategy**

Introduction

Priority urban issues

Creative global city

Healthy mobility

Values

Green transformation

Kind community

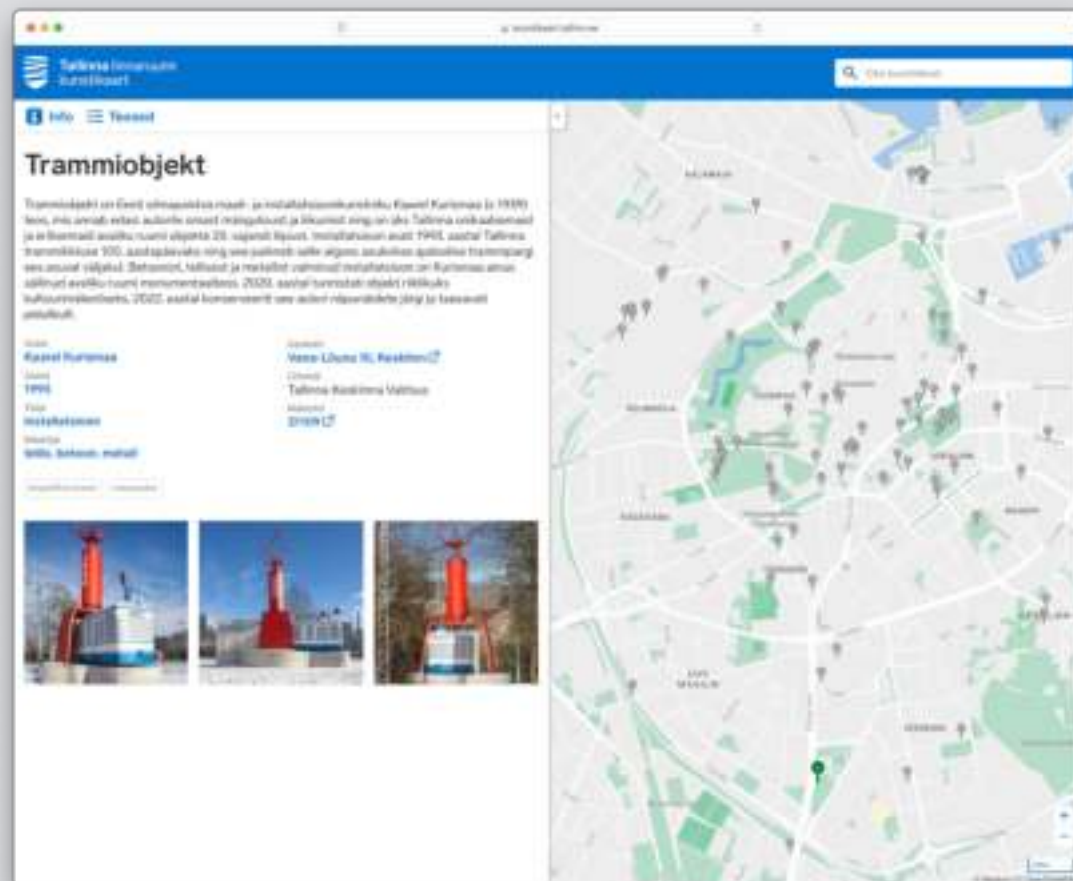
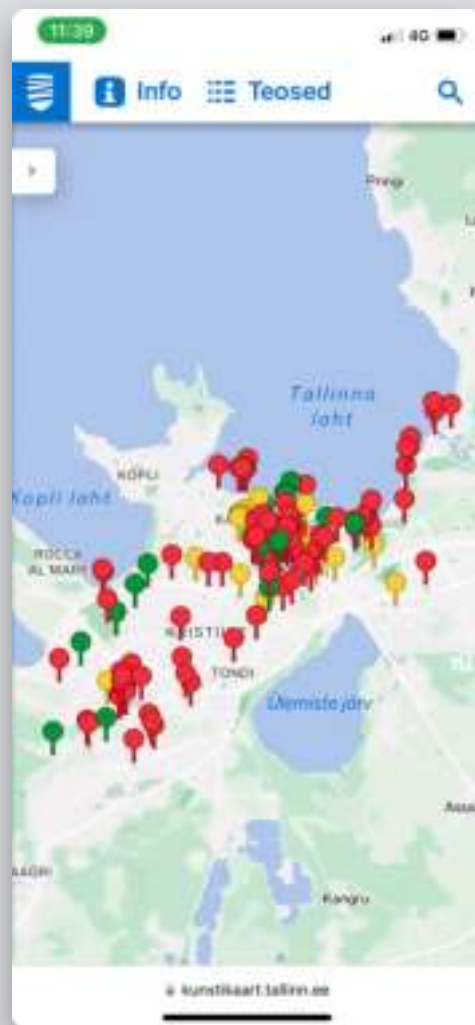
Home that includes the street

Map of city districts future

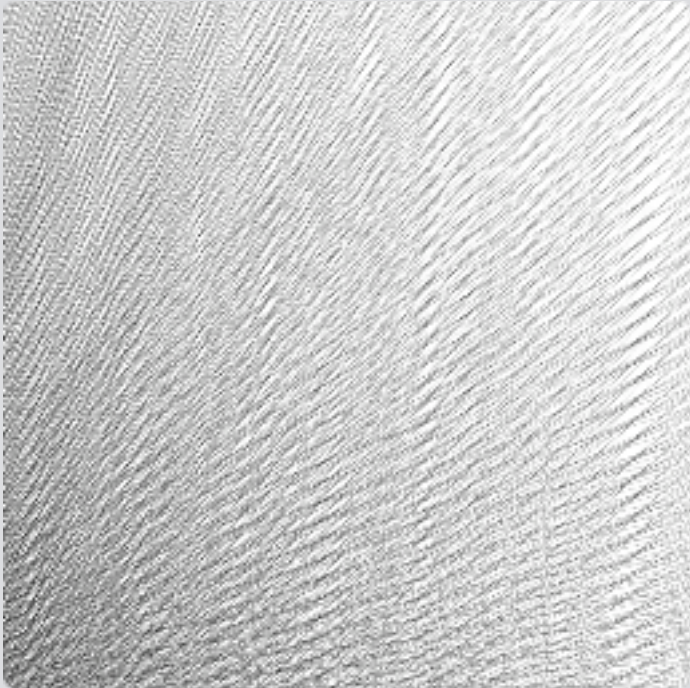
**Areas of activity:**

- Business environment
- Community
- Culture
- Education and youth work
- Environmental protection
- Health and healthcare
- Mobility
- Municipal order
- Social welfare
- Sports and physical activity
- Urban landscape
- Urban planning
- Utility networks





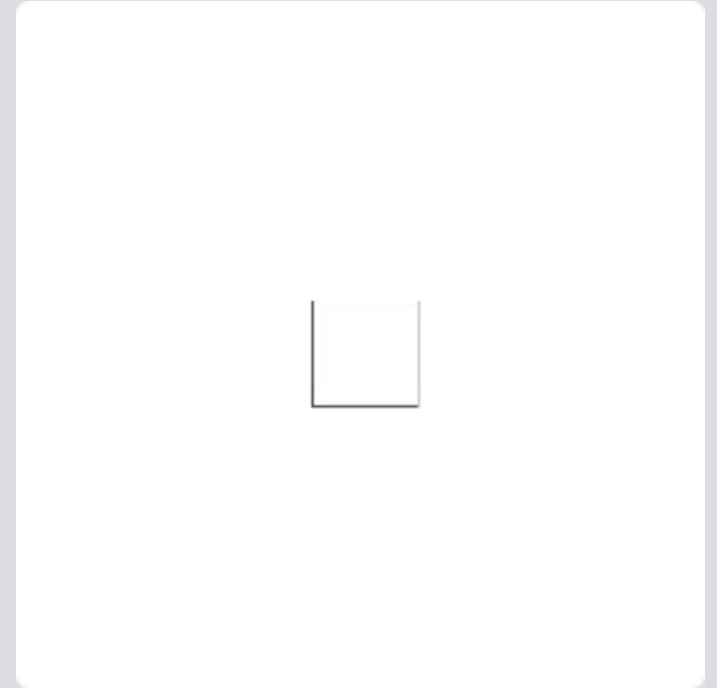




Lill Volmer



Uku Art



Ann Kelder

# **Interactive media for Fat Margaret**























**Belastungsbeleg**

**Aktien 1000 Mk.**

**Abgangstage**

**Koncert**

**Verkauf**

**Herold.**

**5 Mk.**

N<sup>o</sup> 20854

Eltermalt Hapjalukse  
 Hapjalust Eltermale  
**Ges-tefi pilet**  
 „Anulaeva Orenen'i“

60 kop.

**Affordable prices and well organised voyage**

Ship tickets were usually offered in three classes – first class tickets were the most expensive, but also provided the most comfortable voyage. Third class passengers often had to spend the voyage on the deck or in cabins with the poorest conditions. Discounts were generally offered to children and groups of passengers.

Various forms of cooperation with other shipping and, later, other transport companies, as well were often noted in the voyage announcements. For example, the schedules of different ships were coordinated so the passenger could continue travelling by train with the same ticket.



**Korrali laeväühe**

TALLINN – STOCKHOLM

TALLINN – STETTIN

TALLINN – DANZIG

THOMAS CLARKE

Reisepreisi tabeli. A. S. Wladimir

Reisepunkt	1. klass	2. klass	3. klass
Tallinn - Stockholm	100	75	50
Tallinn - Stettin	120	90	60
Tallinn - Danzig	110	80	55

Reisepreisi tabeli. A. S. Wladimir

Reisepunkt	1. klass	2. klass	3. klass
Tallinn - Stockholm	100	75	50
Tallinn - Stettin	120	90	60
Tallinn - Danzig	110	80	55



**Based on *real* data**







1837



Winter



Summer

Origin of departure

Destination

View & settings

1837

1840

1845

1850

1855

1860

1865

1870

1875

1880

1885

1890

1895

1900

1905

1910

1915

1920

1925

1928

1930

1935

1940





13:30

Jaanipäev



## Jaanipäev – Eesti suurim pidu

Jaanipäev on eestlaste oodatum pöha. See tähistab tööaasta lõppu, loodusesse minekut ning suve ja puhkuse algust. Jaanilaupäeval, 23. juunil on kõige lähem öö, siis võib julgelt pääsesetõusuni jaanituld teha ja pidutseda. Eestis on jaanilaupäev eriline kui päev, mil rahvas kõige rohkem liigub. Inimesed lähevad oma vanematekoju, suvilasse, kodukülla, sõprade juurde või linnast välja loodusesse. Lisaks kodustele jaanipidudele toimuvad ka suured noortepeod. Kõige fenomenaalsemalt muutub aga rahvaarv jaanipäeval Saaremaal, sest selleks ajaks suundub suur osa saarlasi tagasi koju. Ka välituristide hulgas on Saaremaa jaanipeod populaarsed.



Sõbbie  
Williams  
kontsert  
Tallinnas

Rally Estonia

Lumelõmm  
Monika  
Paideona

Tallinna  
pendelränne

Eriiline  
segregatsioon  
Eestis

Jaanipäev –  
Eesti suurim  
pidu

Laulupidu

Sõbrine ja Läti  
turistid Eestis

Läti kalastajad  
Peipsi järvel

Sessioonid  
elukohevahetustel

🕒 13:45

Eestlased

## Robbie Williamsi kontsert Tallinnas

Robbie Williamsi kontsert oli 2013. aastal Eesti muusika suursündmus. 20. augustil kogunes Tallinna laukuväljakule üle 60 000 muusikahuvilise, külalastajaid saabus kogu Eestist ja üle kolme tuhande ka välismaalt. Huvitav on see, et enamik külalastajaid lahkus Tallinnast varsti pärast kontserti. Megastaaride kontserdid on eelkõige rahvusvahelise muusikaelu sündmused ja nende majanduslik kasu on toimumiskohas palju väiksem kui rahvuskultuuriga seotud üritustel. Majanduslik kasu ei ole aga seotud kunstielamusega. Robbie Williamsi Tallinna kontsert pakkus suurepärase elamuse ja seda peetakse üheks tema kontserdituuri parimaks.



Robbie  
Williamsi  
kontsert  
Tallinnas

Rally Estonia

Lumeloom  
Roonka  
Pajalaenu

Tallinna  
pendeliränne

Online  
segregatsioon  
Eestis >

Isaapäev -  
Eesti muutm  
pödu

Laulukõdu

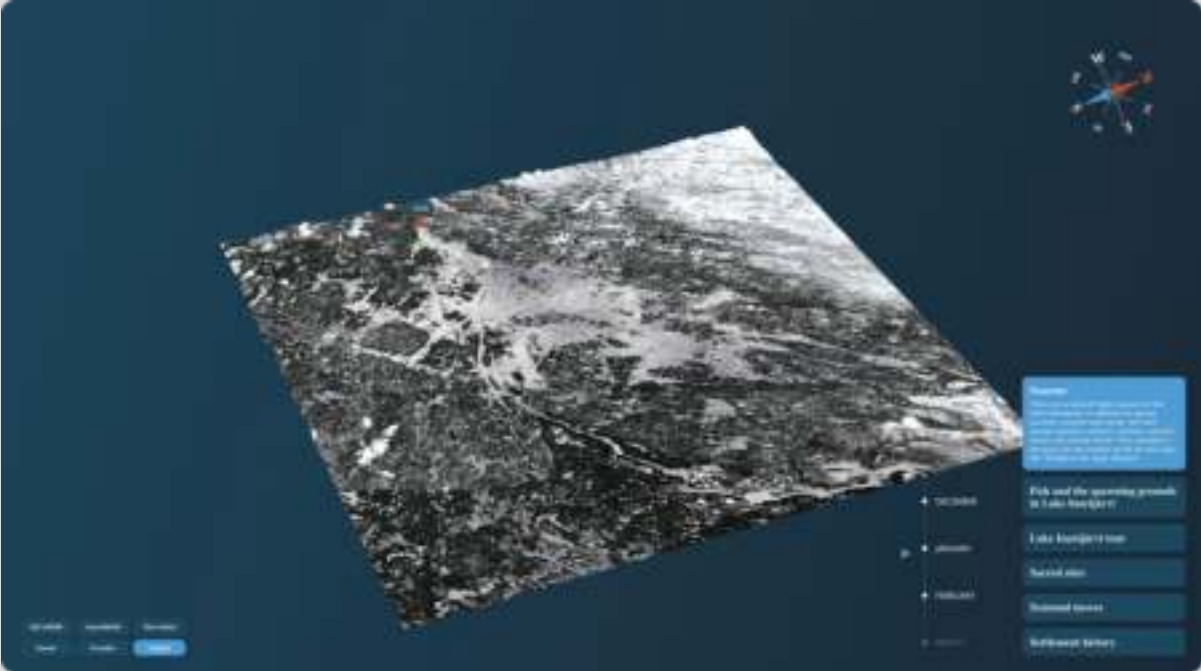
Soome ja Läti  
tunustid Eestis

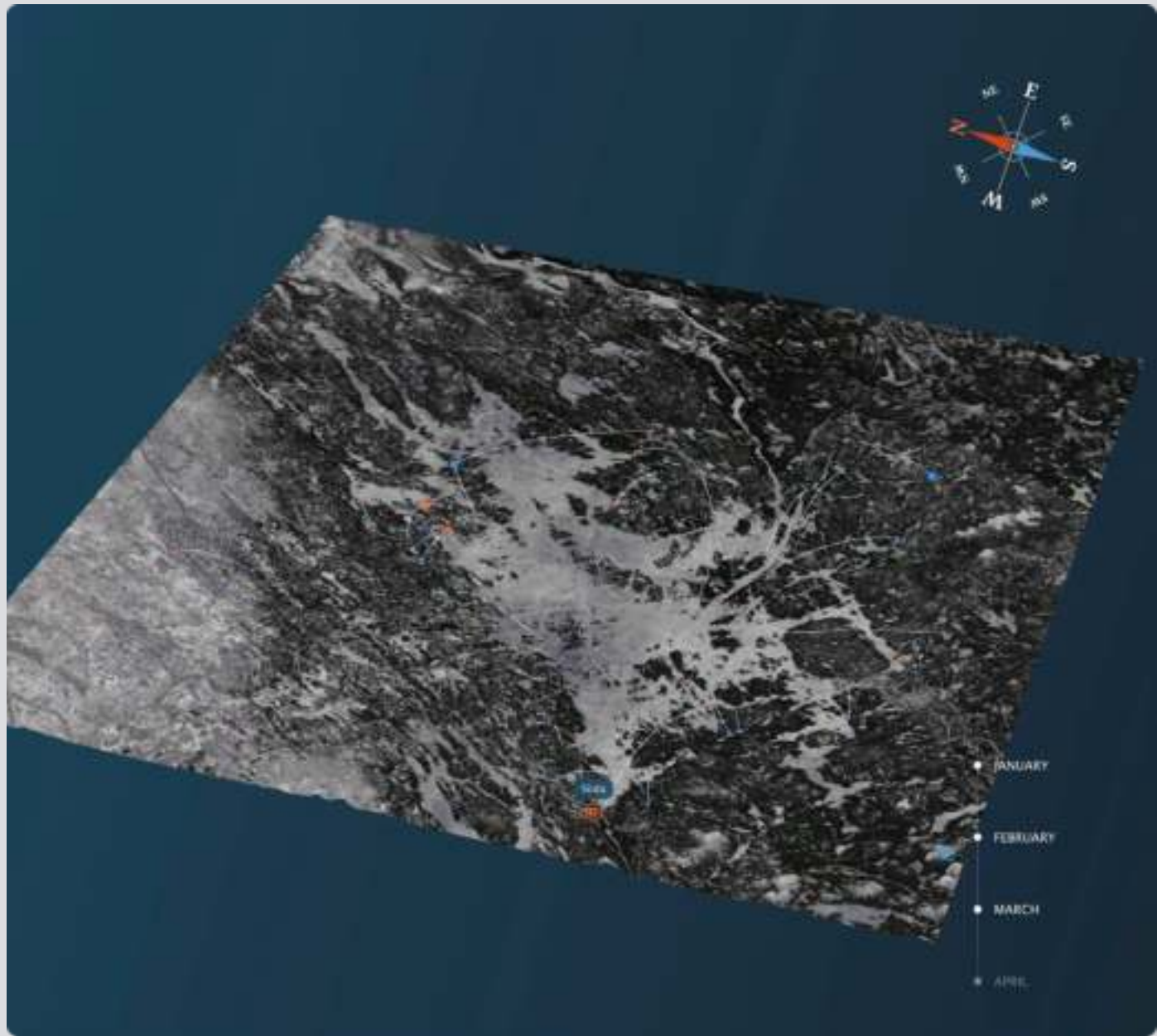
Läti külalastajad  
Peipsi järvel

Sotsiaalsed  
elukohtadehatted

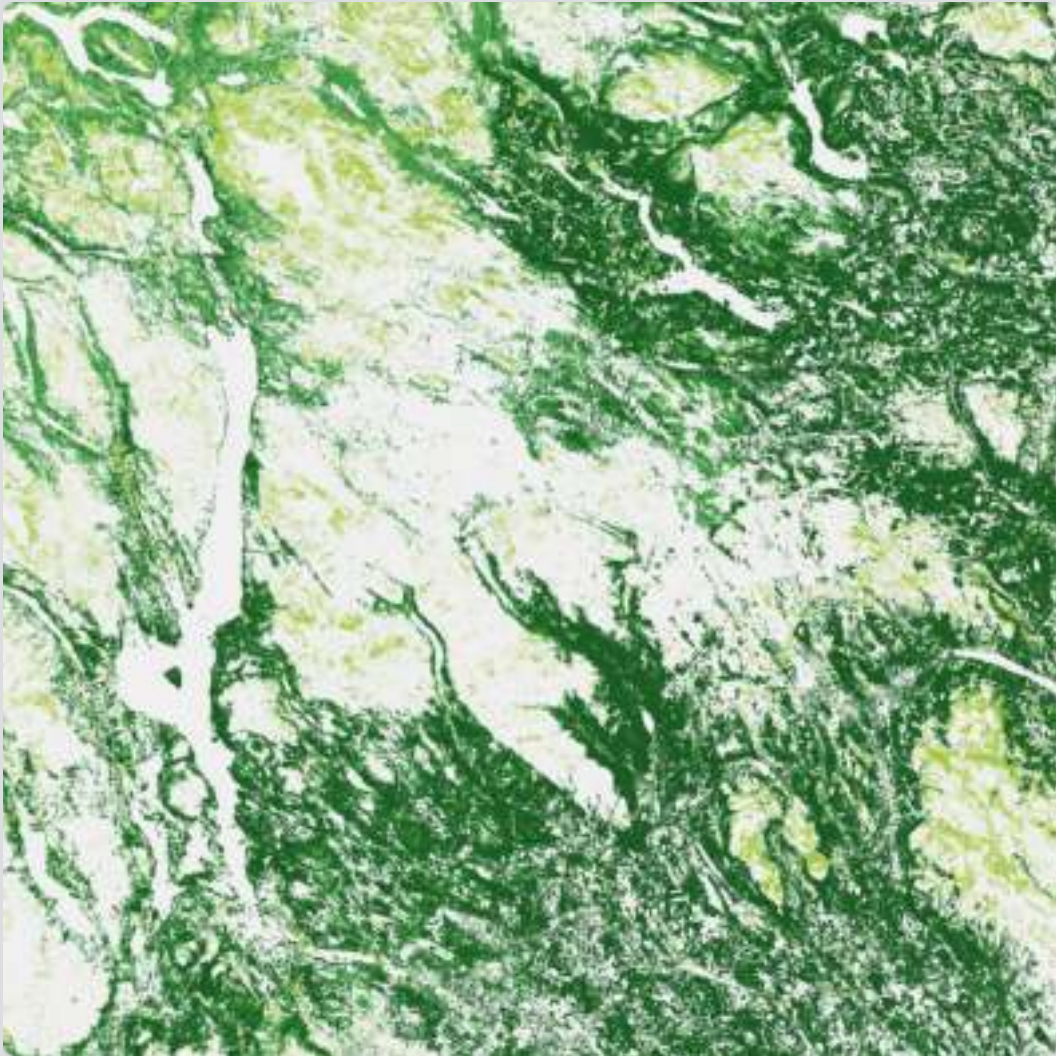


Sámi Museum Siida → **Interactive Lake Inari** /w Motor

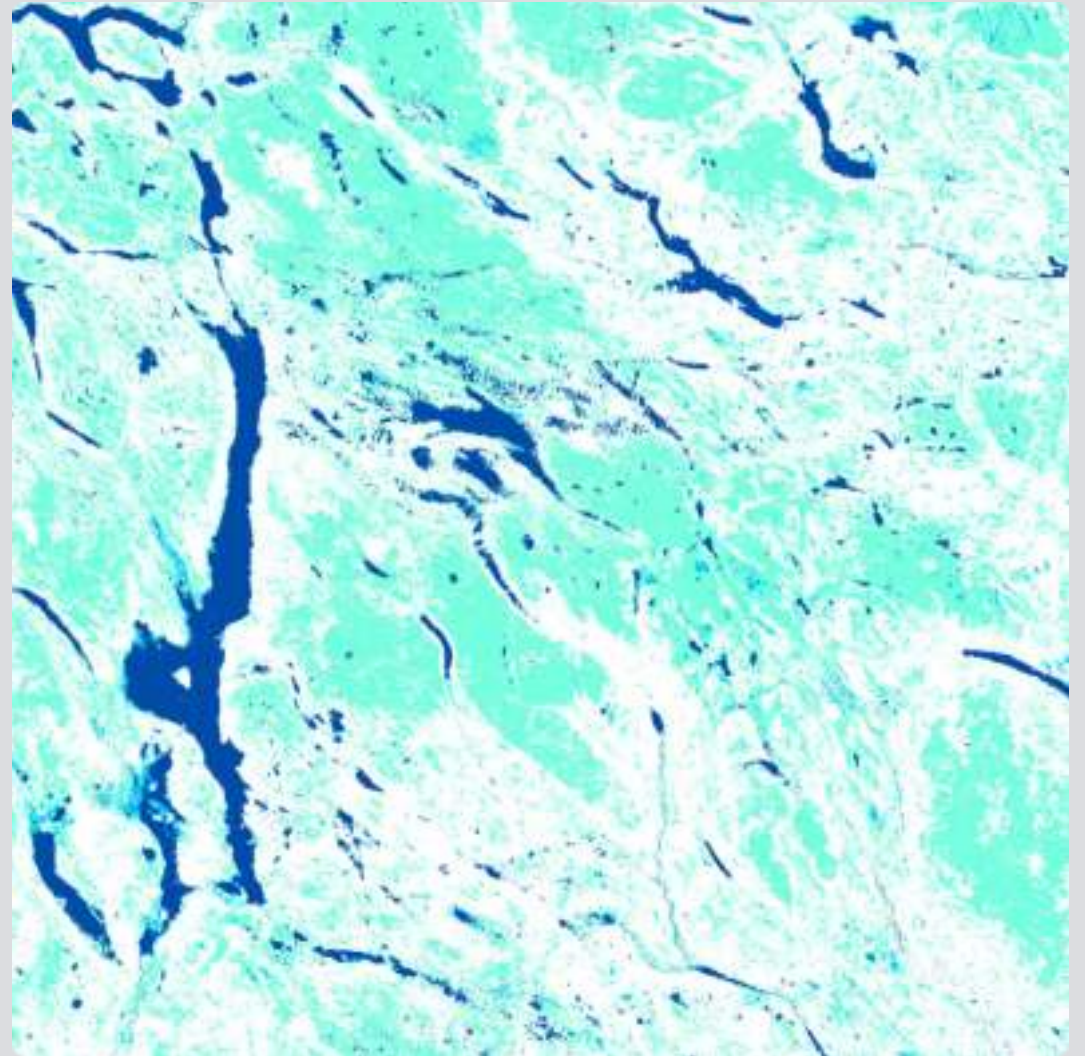




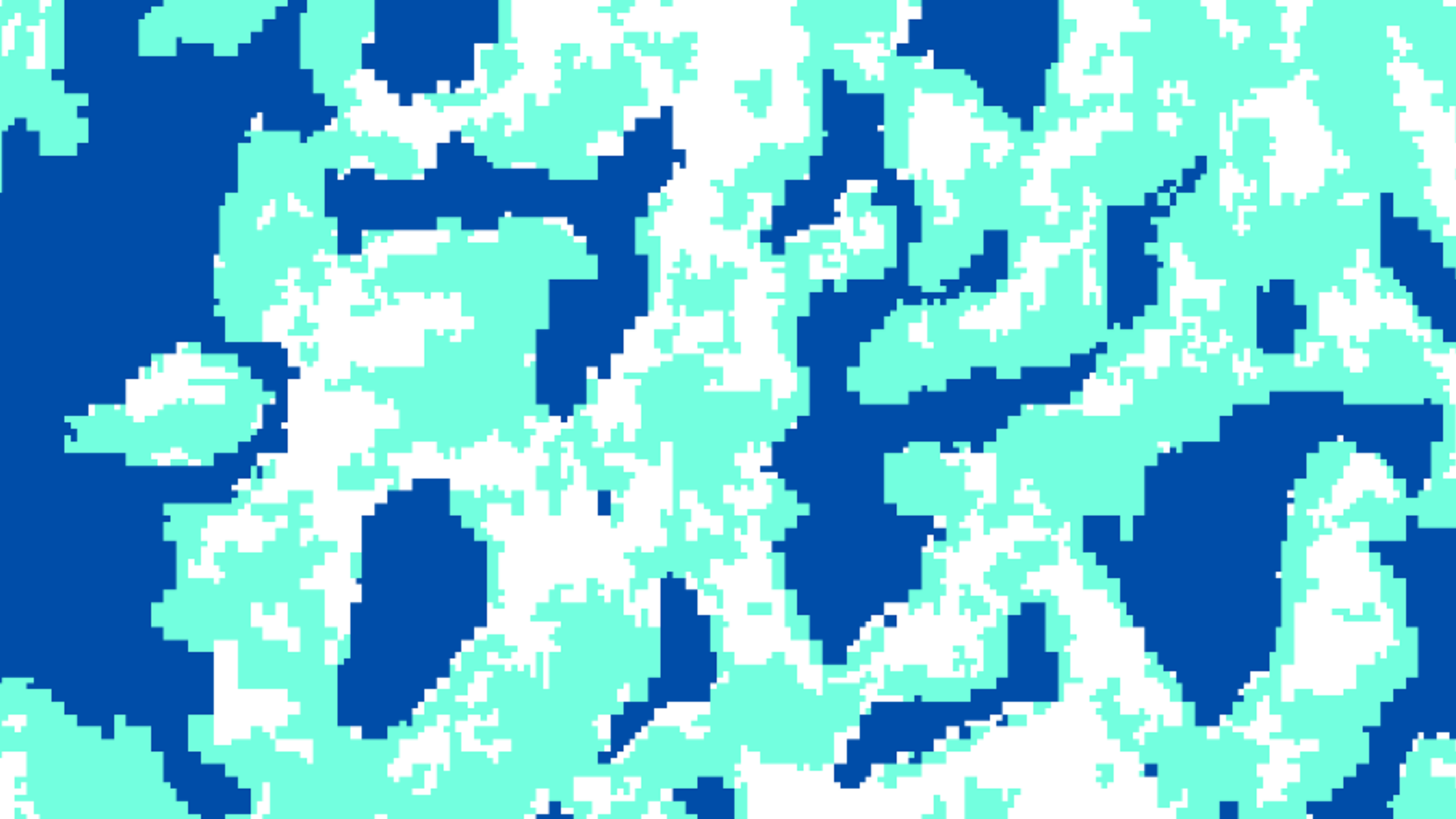




Copernicus Land Monitoring Service  
High Resolution Layer Forest and Grass Types



Copernicus Land Monitoring Service  
High Resolution Layer Water Type

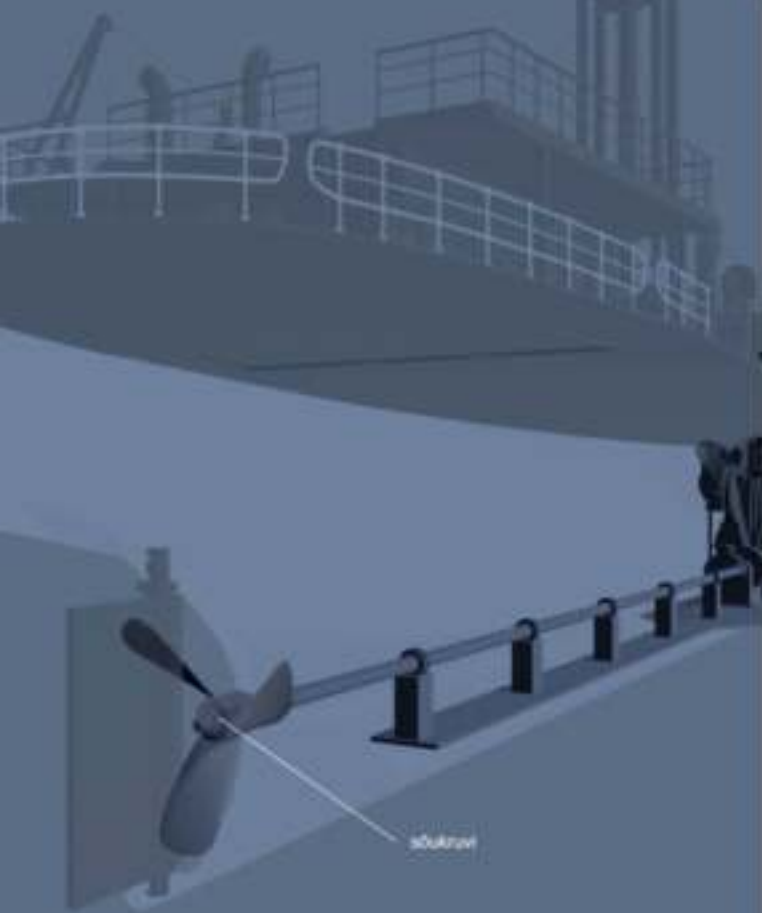


**Digital *handcraft***



## Laeva liikumine

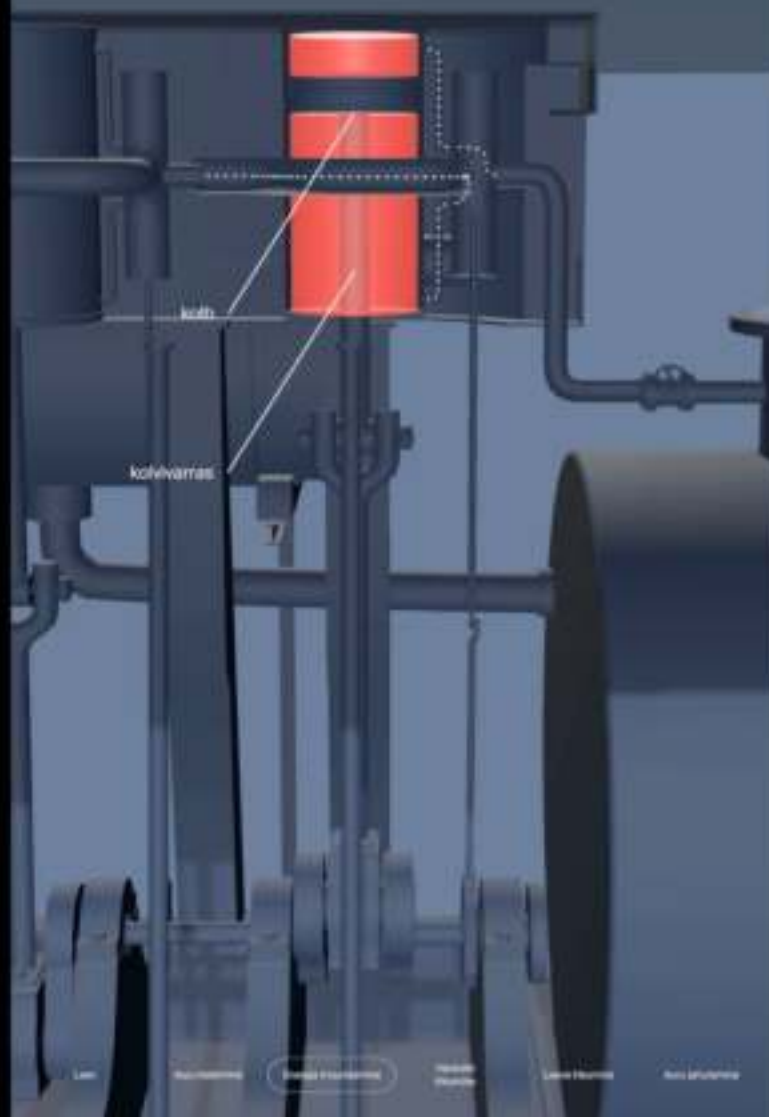
Värvõli külge kinnitub tugivõli, mis toetub masina taga asuvale tugilaagritele. Tugilaagri ülesanna on sõukruvi tekitatava jõu ülevandamine laeva kerele.



sõukruvi

## Energia muundamine

Tekkinud aur juhitakse läbi jaotussõltu silindrisse. Silindrisse jõudnud aur paneb silindri pekkneva kivi üles alla liikuma. Kivi külge kinnitub silindripõhjust välja ulatuv kottivaras.

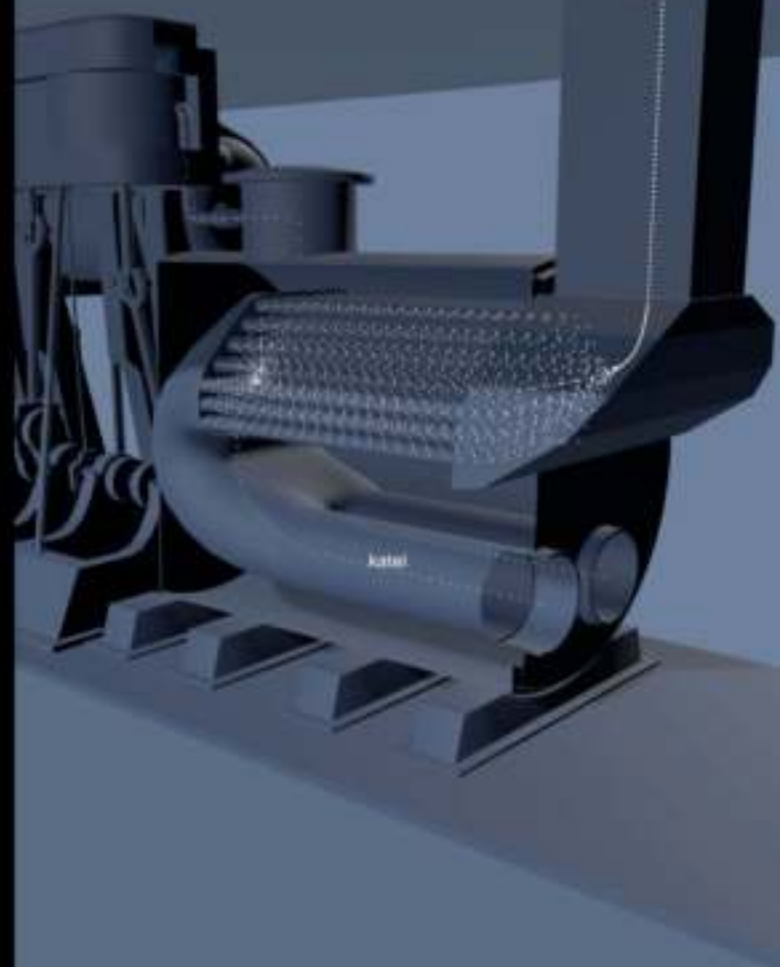


kott

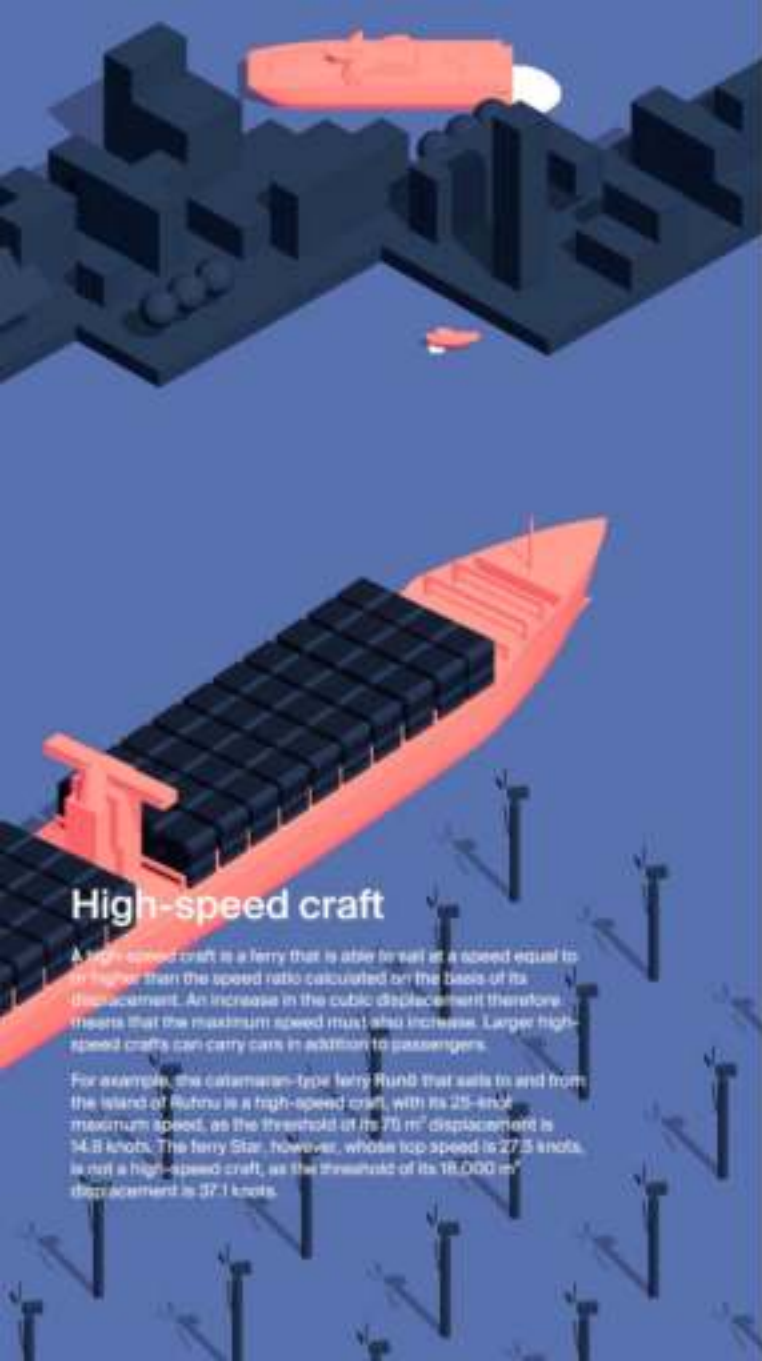
kottivaras

## Auru tekkimine

Katla külmsel tekib katlas oleva vee soojenemisel auru.



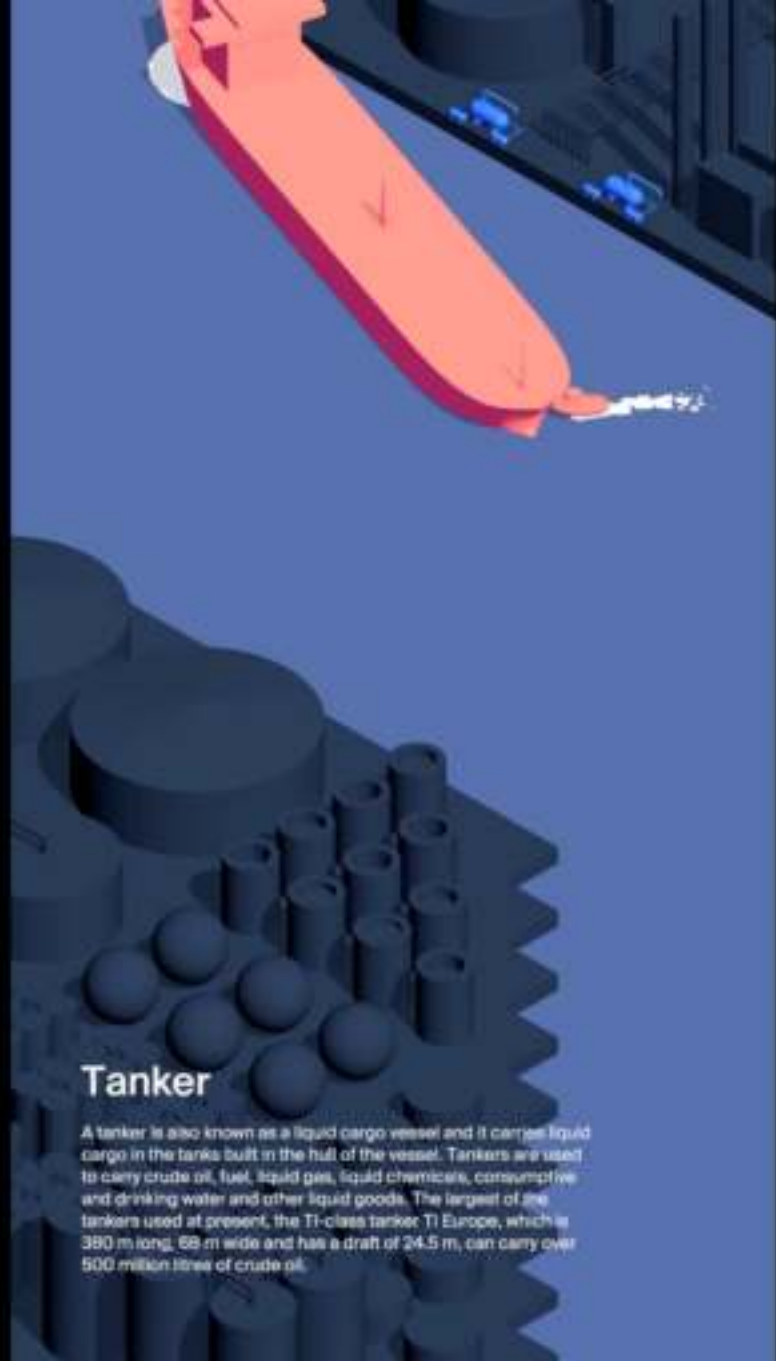
katel



## High-speed craft

A high-speed craft is a ferry that is able to sail at a speed equal to or higher than the speed ratio calculated on the basis of its displacement. An increase in the cubic displacement therefore means that the maximum speed must also increase. Larger high-speed crafts can carry cars in addition to passengers.

For example, the catamaran-type ferry *Runo* that sails to and from the island of *Ruho* is a high-speed craft, with its 25-knot maximum speed, as the threshold of its 70 m<sup>3</sup> displacement is 14.8 knots. The ferry *Star*, however, whose top speed is 27.3 knots, is not a high-speed craft, as the threshold of its 18,000 m<sup>3</sup> displacement is 37.1 knots.



## Tanker

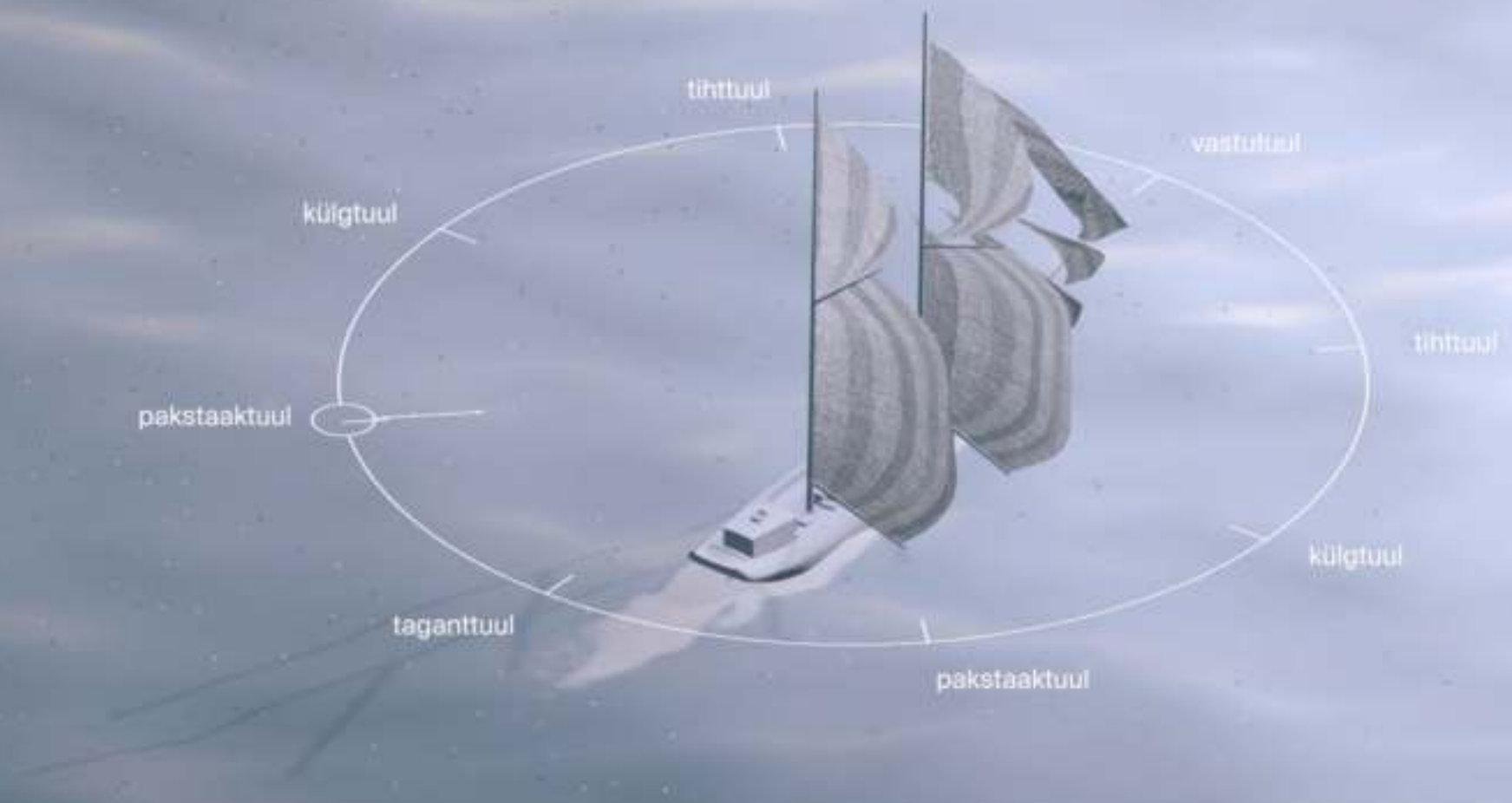
A tanker is also known as a liquid cargo vessel and it carries liquid cargo in the tanks built in the hull of the vessel. Tankers are used to carry crude oil, fuel, liquid gas, liquid chemicals, consumptive and drinking water and other liquid goods. The largest of the tankers used at present, the T1-class tanker *T1 Europe*, which is 380 m long, 68 m wide and has a draft of 24.5 m, can carry over 500 million litres of crude oil.



## Ferry

A ferry is a passenger ship with a car deck, which is used to carry people, cars and to a lesser extent cargo on a regular service. This type of vessel is the most common on the international routes in Northern Europe, incl. on the Baltic Sea. It is also used for local services all around the world, mostly on larger inland bodies of water and for sailing between islands and the mainland. The biggest ferry in terms of the number of passengers, the ship *Color Magic* of Color Line, can carry 2,700 passengers. *Silja Europa*, *Silja Serenade* and *Silja Symphony* are the vessels of Tallink that are among the largest ferries in Europe.

Fast ferries such as Tallink's *Megaestar* are a subtype of the ferries brought in for the Tallinn-Helsinki service in the last decade. However, these ships are not defined as traditional high-speed crafts according to the International Code of Safety for High-Speed Craft.





# Meaningful interaction



Estonian Health Museum → **Smile!**



Aron Urb





Kristaps Ancāns × Platvorm → **Polar Rainbow**





# **Tactile exhibits for visually impaired visitors**





Priit Mürk/ERR



Priit Mürk/ERR







**platvorm.ee**

**studio@platvorm.ee**