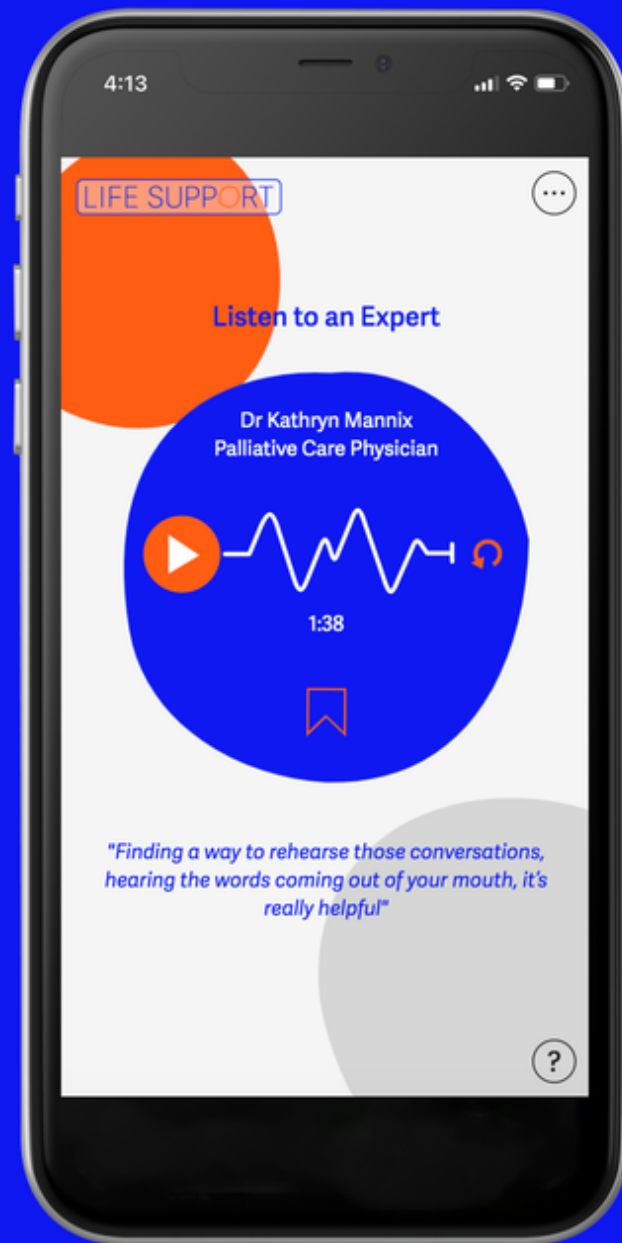
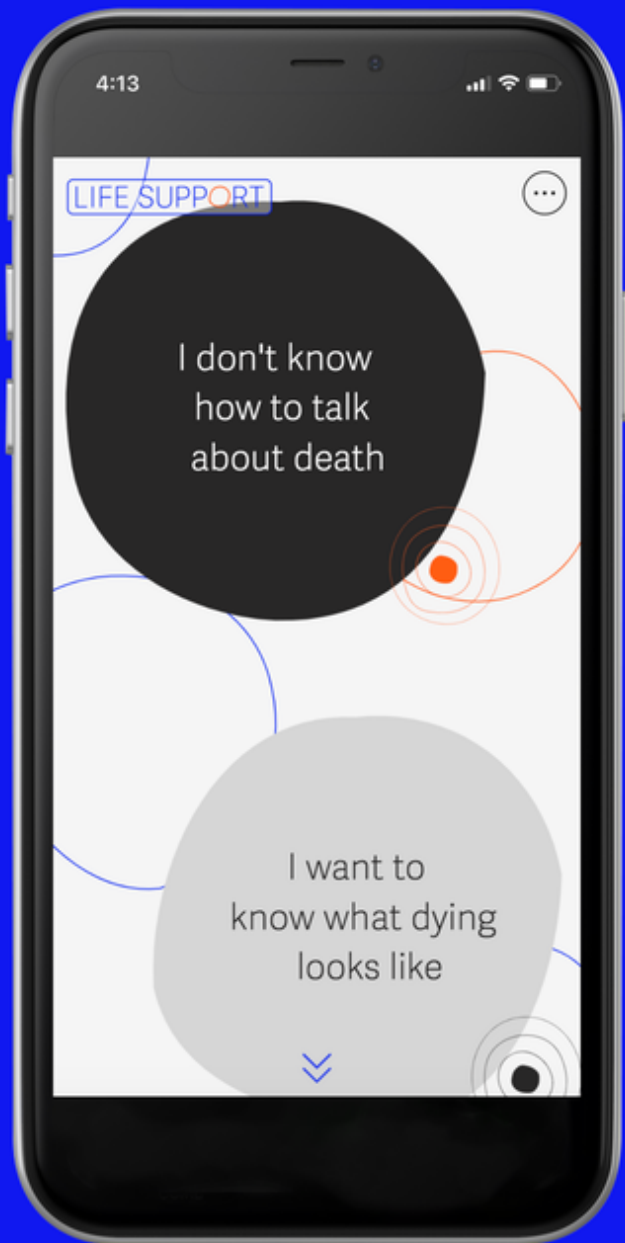


# The Liminal Space





Econo-Utilities

3 OLD POULTRY BARN  
HOME FARM DEVELOPMENT  
SKIPTON

# ALTO'S

GLOBAL CHOICE, FREE TRADE PRICES

£13



BOX OF AVOCADOS



ROYAL & TOWN RARE PLUMS

CountryLeisure CORPORATION

Welcome

Congratulations!  
You've just moved to a new house at the edge of town. It's part of a new farm conversion development, with great links to the nearby countryside. When you move in you find three letters have already been delivered - a welcome letter from your energy company, a leaflet from a nearby supermarket and an advert from a local leisure company.

1



THE PLOUGH & DRONE

LUNCH

chedule has been updated to accommodate for harvest and at Birdlip Mill and Farm as agreed at the Cheltenham Dis-

f from 8pm to 7am (this is an extension of 2 hours from the

e used once per week

ped in November or December, although this depends on g the Met Office forecasts.

MEADOWS NATURE SANCTUARY



YOU'RE INVITED TO

Kate's 50th

It's not long until your good friend turns fifty. Another friend is organising the party and has found a great location - a new nature reserve in the countryside. They have sent you a hand-written invitation to the party, a map of the reserve outlining the activities you can take part in on the day, as well as a taster sample from the reserve's locally-produced food menu.

2

You've just arrived at your rented holiday cottage in the Cotswolds, now the UK's leading centre for high-efficiency agriculture. In your room you find a guest pack which gives you some information about a new farming visitor centre you could visit, a recommendation for a local pub, and a Council letter outlining the local water regulations in place during your stay.

3



PECKWORTH'S APPLE CHIPS

HAND-DRIED CHIPS SOURCED FROM SURPLUS APPLES AT THE PECKWORTH RESERVE CIDER & VINEYARD

LOCALLY PRODUCED & PACKAGED IN THE FERNLEY VALLEYS

"The perfect pairing with bio-wines or cider" - Zanna Wheeler, Times Food Critic

15g Organic apple chips  
100% certified organic cultivation. Nutrition facts per 100g: Energy 15.6kJ / 3.68 kcal, Fat 0.8g, of which saturates 0.5g, Carbohydrate 80.2g, of which sugar 49.8g, Protein 2.3g, Salt 0.1g. Fibre 8.5g. **May contain traces of gluten and nuts.** Keep cool and dry. Best before: 01/04/2021. Produced in: UK. CO2 500g



Grow for Gloucestershire at Biocosm farm

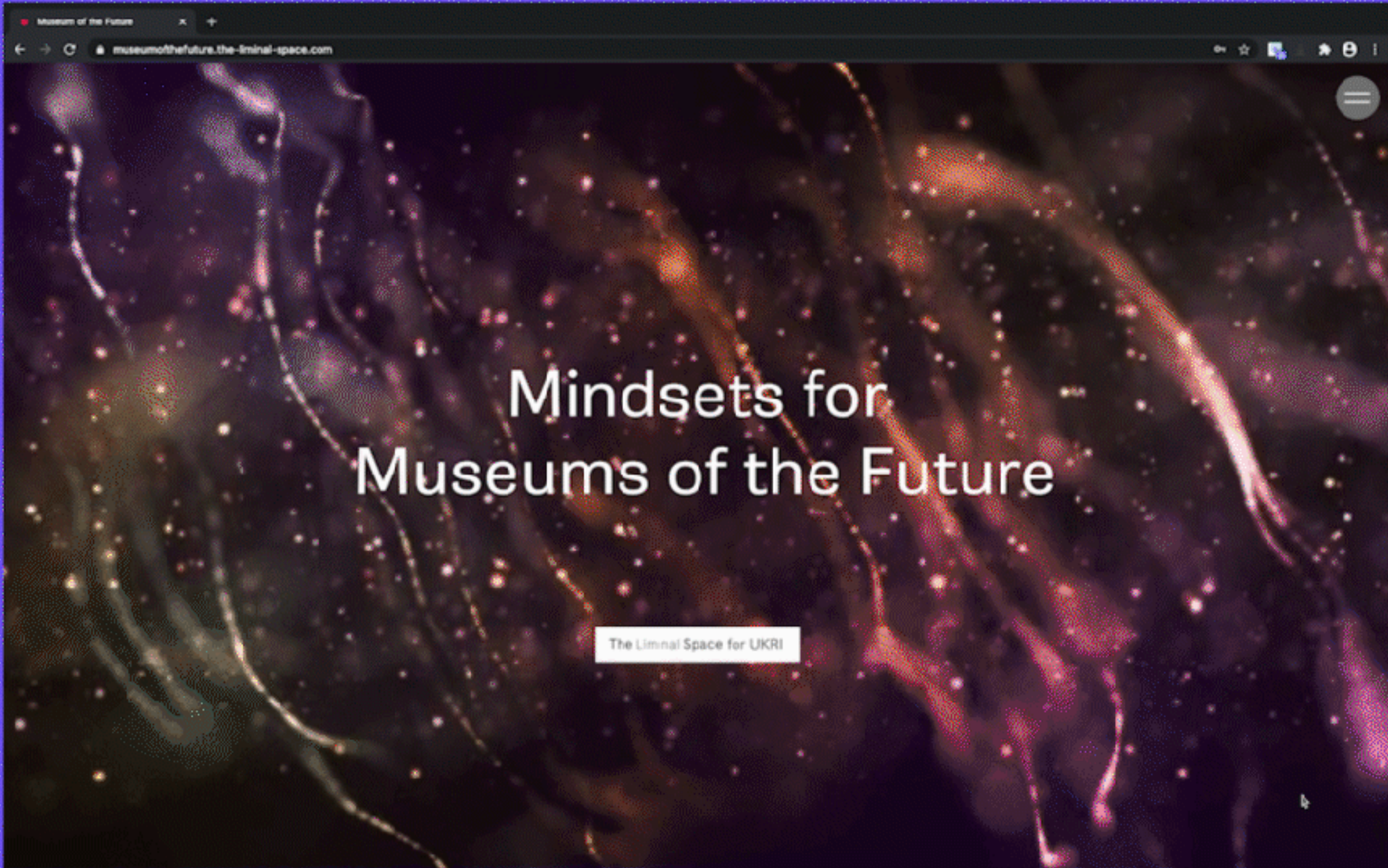
Plant these seeds using one of our state-of-the-art farming robots as part of your tour of the UK's leading tourist attraction! Enjoy a driverless tour of the UK's largest vegetable farm covering 64,000 acres





**MILLIONS DOING IT WELL  
IS BETTER THAN  
ONE PERSON DOING  
IT PERFECTLY**





# Mindsets for Museums of the Future

The Liminal Space for UKRI



# The Context



# Shifting Habits

Identity: Global Local

Identity: Plurality & Intersectionality

Families: Decentralised & Suburban

Families: 24/7 Lives

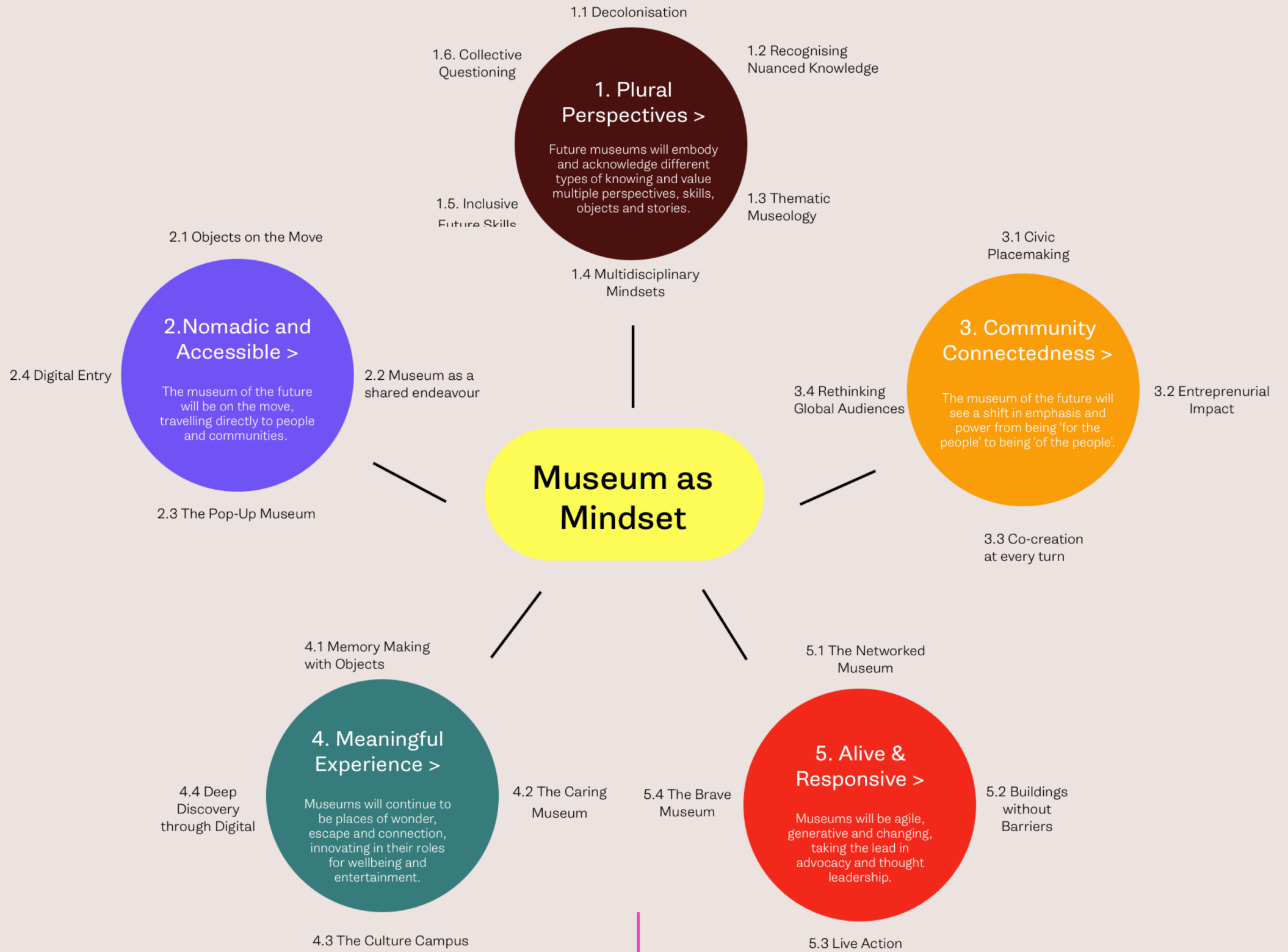
Families: Ageing Population

Trust: Media and Organisations

Trust: Fear Mentality and Wellbeing







# 1. Plural Perspectives

1.1 Decolonisation

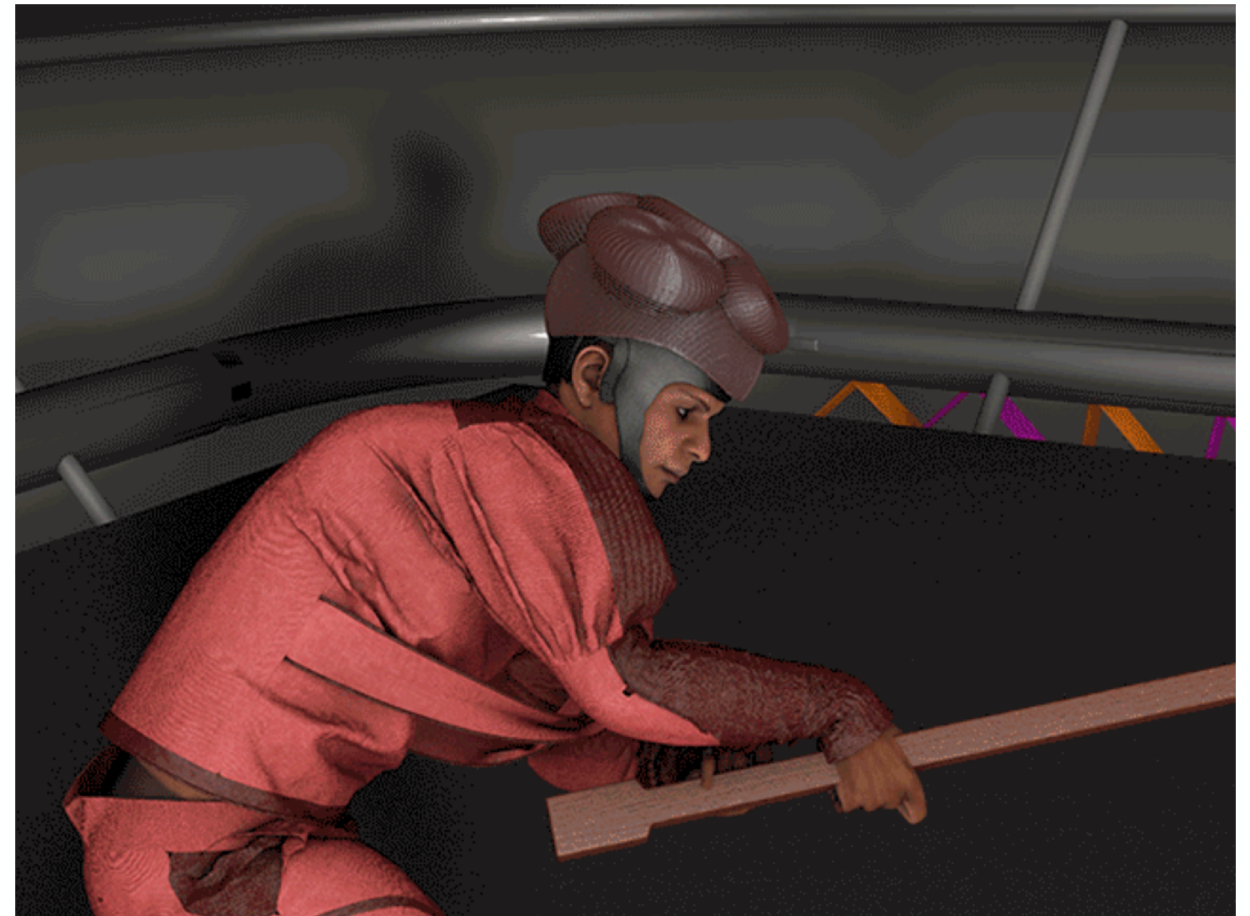
1.2 Valuing Nuanced Knowledge

1.3 Thematic Museology

1.4 Multidisciplinary Mindsets

1.5 Inclusive Future Skills

1.6 Collective Questioning



Russell Royer, Choreum 2020

## 2. Nomadic and Accessible

2.1 Objects on the Move

2.2 Museum as a Shared Endeavour

2.3 The Pop-Up Museum

2.4 Digital Entry



Kai XR Virtual Museum Access



# 3. Community Connectedness

3.1 Civic Placemaking

3.2 Entrepreneurial Impact

3.3 Co-Creation at Every Turn

3.4 Rethinking Global Audiences

**York Museums Trust** @YorkMuseumTrust  
Judi Dench as objects in our collection — a thread

3:07 PM · Jul 9, 2020

8.4K 2K Share this Tweet

**York Museums Trust** · Jul 9, 2020  
Replying to @YorkMuseumTrust

York Museums Trust

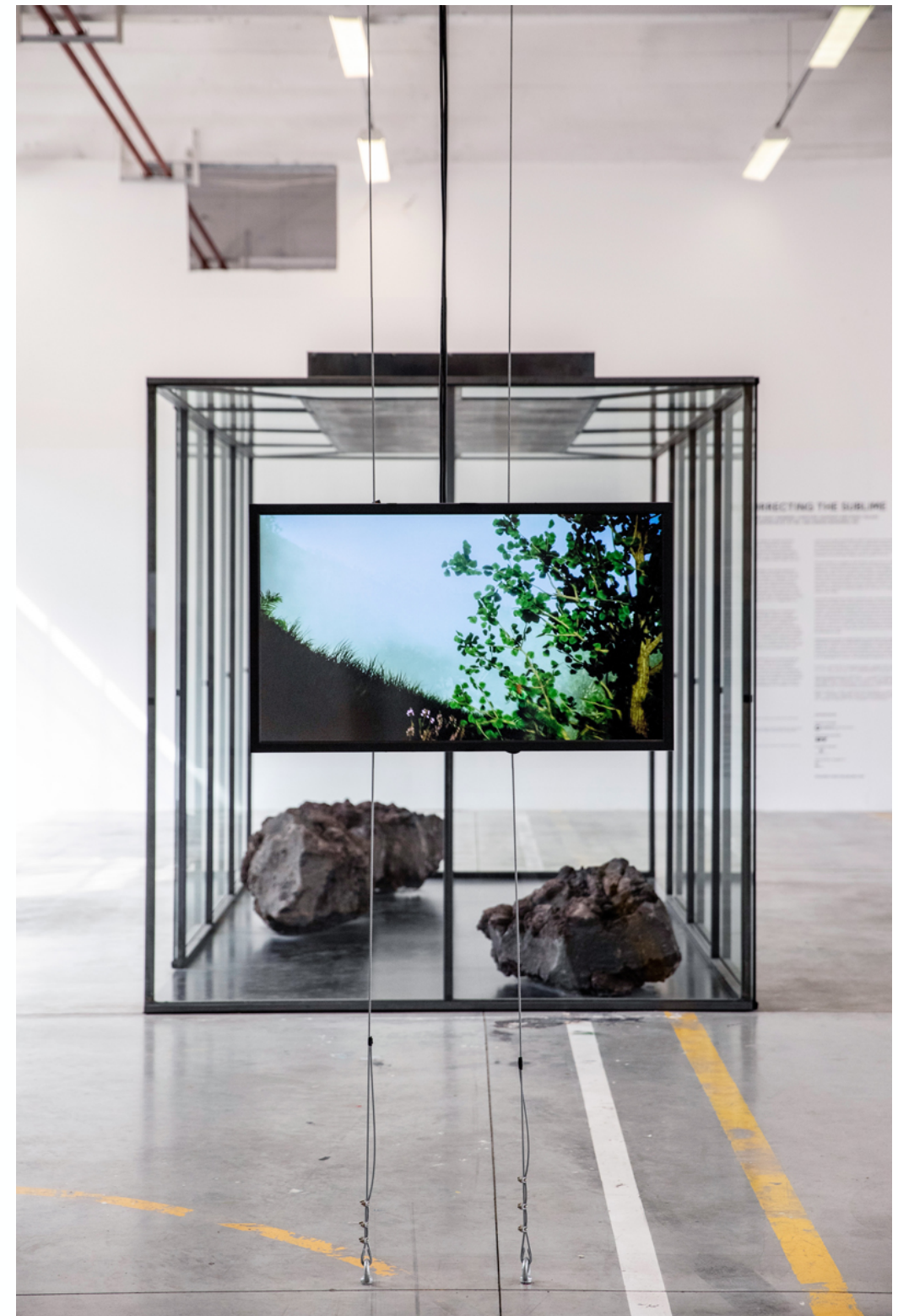
# 4. Meaningful Experience

4.1 Making Memories through Objects

4.2 The Caring Museum

4.3 The Culture Campus

4.4 Deep Digital Discovery



Dr Alexandra Daisy Ginsberg, Resurrecting the Sublime

# 5. Alive and Responsive

5.1 The Networked Museum

5.2 Buildings without Barriers

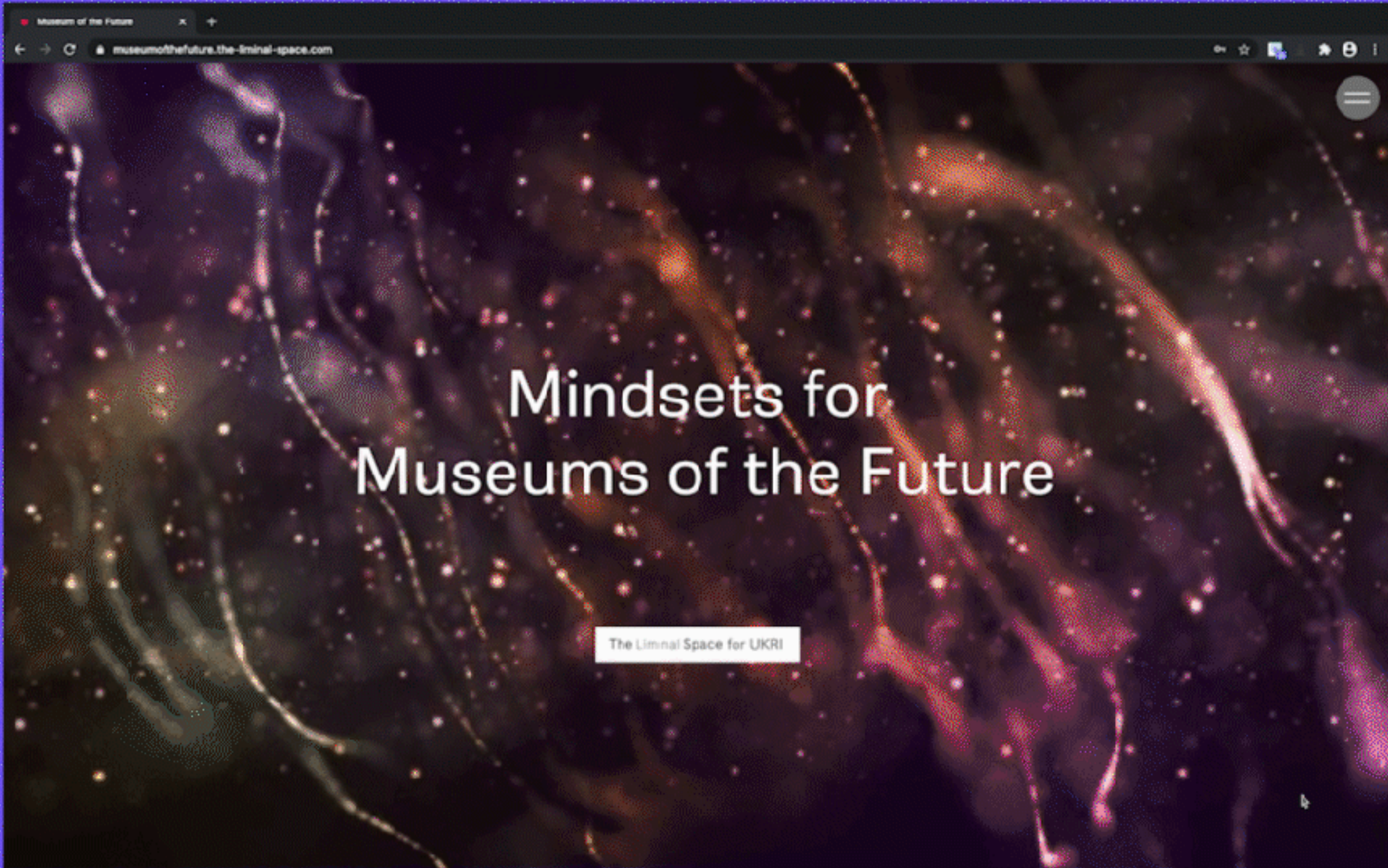
5.3 Live Action

5.4 The Brave Museum



Asif Khan Architects, the Museum of London





# Mindsets for Museums of the Future

The Liminal Space for UKRI



# Thank You

[the-liminal-space.com](https://the-liminal-space.com)